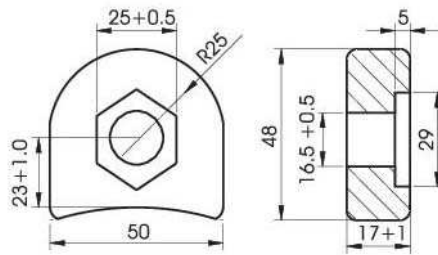




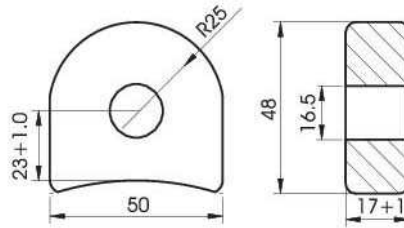
TERZI PUNTI – CILINDRI DOPPIO EFFETTO –
ACCESSORI

SUPPORTO PER ROTORE TRINCIA

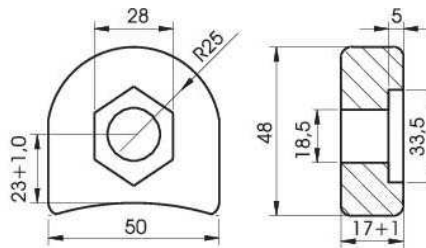
Codice	€uro
AS166	5,00



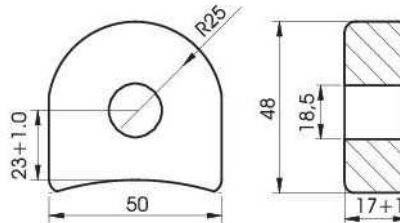
Codice	€uro
AS167	5,00



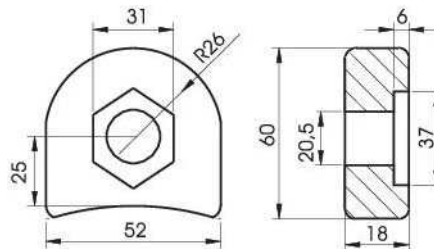
Codice	€uro
AS201	5,00



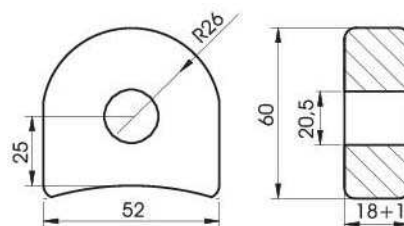
Codice	€uro
AS202	5,00



Codice	€uro
AS203	6,00

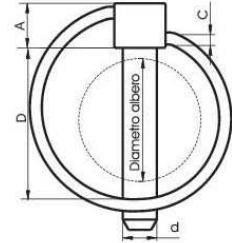


Codice	€uro
AS204	6,00



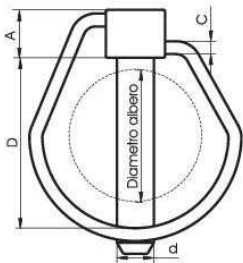
SPINA A SCATTO TIPO TONDA

Codice	d	D	A	C	Albero	€uro
AS01	4,5	24	6,5	2	Da 10 A 15	0,25
AS02	5	36	7	2,5	Da 14 A 18	0,25
AS03	6	36	8	3	Da 18 A 22	0,27
AS04	8	40	10	3,4	Da 22 A 28	0,30
AS05	9	40	12	3,4	Da 26 A 32	0,32
AS06	10	40	13	3,5	Da 28 A 36	0,34
AS07	11	42	14	3,5	Da 30 A 40	0,36



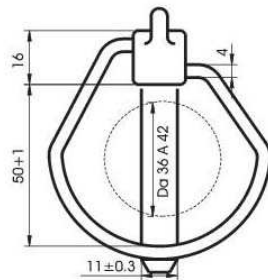
SPINA A SCATTO TIPO PERA

Codice	d	D	A	C	Albero	€uro
AS08	4,5	24	6,5	2	Da 10 A 15	0,35
AS09	5	36	7	2,5	Da 14 A 18	0,35
AS10	6	36	8	3	Da 18 A 22	0,37
AS11	8	40	10	3,4	Da 22 A 28	0,40
AS12	9	40	12	3,4	Da 26 A 32	0,42
AS13	10	40	13	3,5	Da 28 A 36	0,44
AS14	11	42	14	3,5	Da 30 A 40	0,46



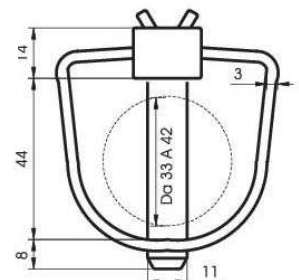
SPINA A SCATTO - d=11

Codice	€uro
AS15	2,10



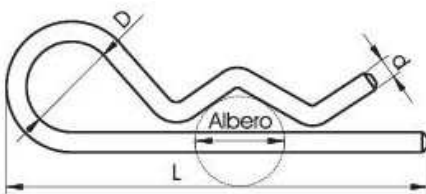
COPPIGLIA DI SICUREZZA

Codice	€uro
AS16	1,80

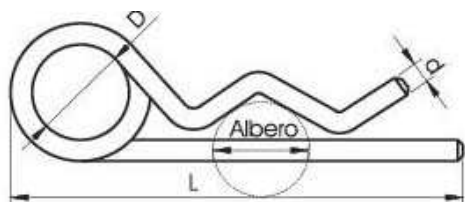


COPPIGLIA A MOLLA

Codice	d	L	D	Albero	€uro
AS21	1,8	35	8	Da 06 A 08	0,10
AS22	2	50	12	Da 10 A 12	0,10
AS23	2,5	58	14	Da 11 A 13	0,14
AS24	3	61	18	Da 12 A 16	0,18
AS25	3,5	80	18	Da 15 A 21	0,20
AS26	4	83	18	Da 16 A 30	0,20
AS27	5	99	24	Da 20 A 35	0,30
AS28	6	115	24	Da 28 A 45	0,45
AS29	7	150	25	Da 32 A 50	1,10
AS30	8	160	42	Da 45 A 58	1,20



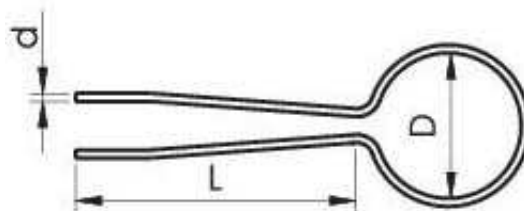
COPPIGLIA A MOLLA DOPPIO GIRO



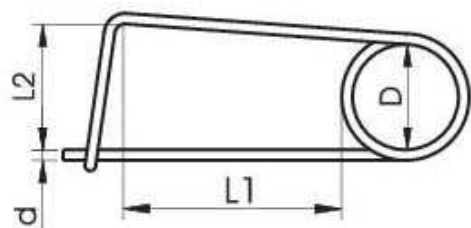
Codice	d	L	D	Albero	€uro
AS31	3	75	18	Da 10 A 19	0,50
AS32	4	99	22	Da 16 A 25	0,60
AS33	4,5	103	25	Da 20 A 28	0,70
AS34	5	111	26	Da 24 A 35	0,80
AS35	6	150	30	Da 28 A 45	1,20

COPPIGLIA A FORCELLA

Codice	D	L	d	€uro
AS36	16	38	3 X 1,5	0,16
AS37	28	56	5 X 2,5	0,20



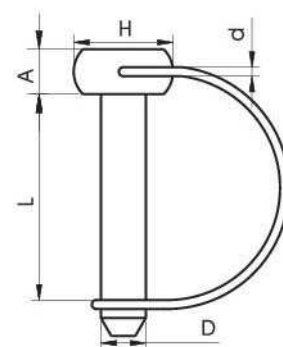
MOLLE FERMAGANCI



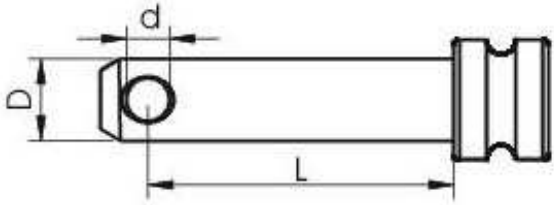
Codice	d	D	L1	L2	€uro
AS38	3	20	60	35	0,90
AS39	4	32	100	55	1,00
AS40	5	32	90	43	1,10
AS41	6	30	100	50	1,30

SPINOTTI PER MOTOZAPPA

Codice	D	H	d	A	L	Albero	€uro
AS317	5	11	2,0	5	35	Da 25 A 50	1,10
AS316	7	14	2,0	6	40	Da 25 A 56	1,30
AS17	8	13	2,0	7	40	Da 26 A 40	1,40
AS18	8	13	2,5	7	60	Da 40 A 56	1,40
AS19	10	15	2,0	10	40	Da 26 A 40	1,50
AS20	10	15	2,5	10	60	Da 40 A 56	1,60
AS177	10	19	2,5	10	60	Da 40 A 56	1,60



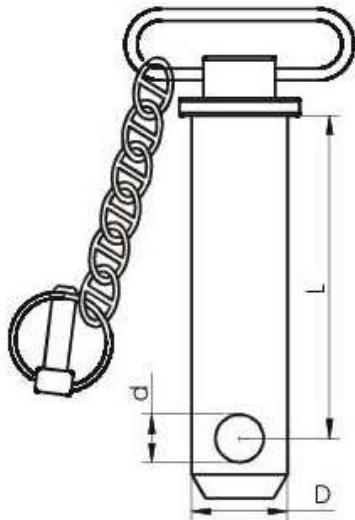
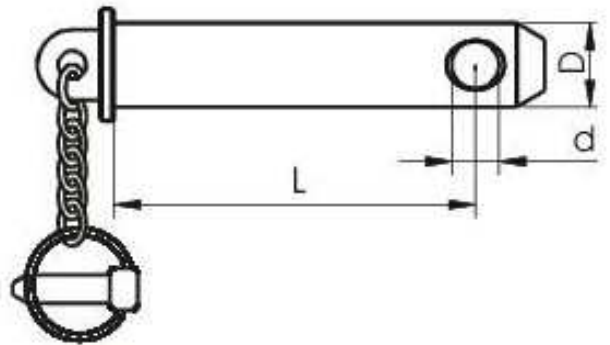
PERNO PER TERZO PUNTO CON BATTUTA



Codice	D	L	d	€uro
AS51	19	90	11	2,80
AS250	22	100	11	4,00
AS216	22	185	11	5,70
AS52	25	98	12	5,00
AS205	28	130	12	7,40
AS53	31	130	12	8,50

PERNO PER TERZO PUNTO CON CATENA E SPINA

Codice	D	L	d	€uro
AS49	19	100	9	5,10
AS50	25	100	12	6,70

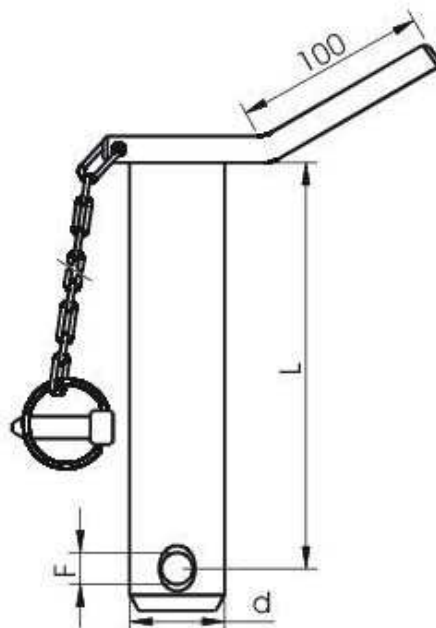


SPINOTTI D'ATTACCO

Codice	D	L	d	€uro
AS42	19	115	8	5,70
AS43	19	165	8	6,40
AS44	22	165	9	7,10
AS45	25	165	10	8,00
AS46	28	125	12	9,00
AS47	28	165	12	8,90
AS48	32	165	12	9,70

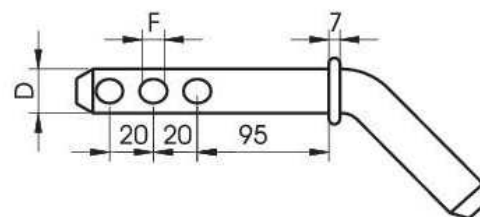
PERNO CON MANIGLIA CATENA E SPINA

Codice	D	L	F	€uro
AS69	19	135	9	4,20
AS213	19	175	9	4,30
AS70	22	135	11	4,90
AS214	22	175	11	4,90
AS71	25	135	12	5,58
AS123	25	175	12	5,95
AS72	28	137	12	6,20
AS215	28	175	12	6,90
AS73	32	176	12	8,50

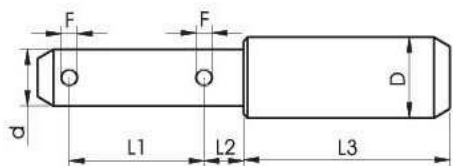


PERNO PIEGATO

Codice	D	F	€uro
AS67	19	12	4,90
AS68	22	12	5,50



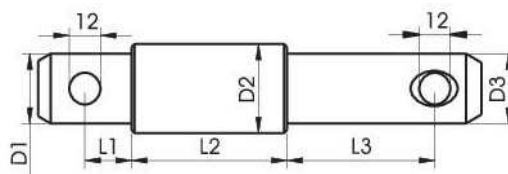
PERNO UNIVERSALE



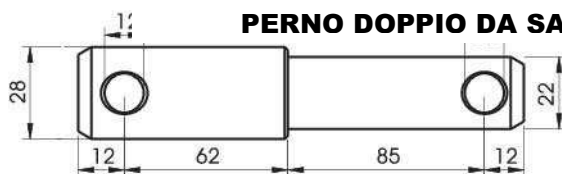
Codice	d	D	L1	L2	L3	F	€uro
AS172	15	19	40	11	60	5,0	5,30
AS54	19	25	57	19	85	5,2	5,40
AS55	22	28	57	20	85	5,2	5,80

PERNO DOPPIO INTERCAMBIABILE PER ATTACCO ATTREZZI

Codice	D3 D1	D2	L1	L2	L3	€uro
AS87	19	25	19	20	70	6,20
AS88	22	28	22	21	70	6,50
AS318	25	32	30	90	90	7,20
AS319	28	36	28	100	100	7,20



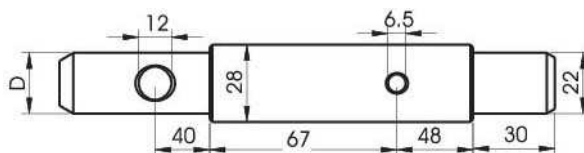
PERNO DOPPIO DA SALDARE PER ATTACCO ATTREZZI



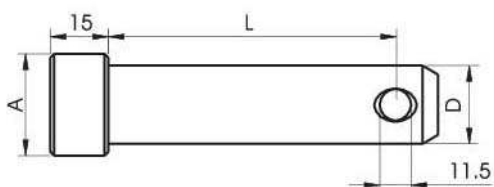
Codice	€uro
AS89	6,30

PERNO INTERCAMBIABILE PER ATTACCO ATTREZZI

Codice	D	€uro
AS85	22	7,35
AS86	25	8,05

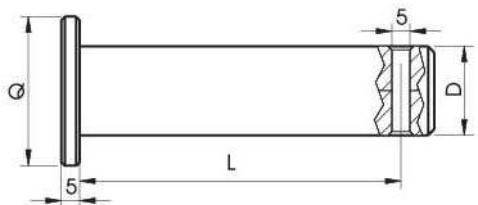


PERNO DA SALDARE



Codice	D	L	A	€uro
AS81	19	85	25	3,90
AS82	22	60	28	3,90
AS83	25	85	32	4,15
AS84	28	60	35	5,10

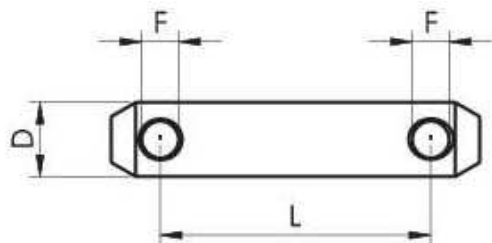
PERNO CON TESTA QUADRA



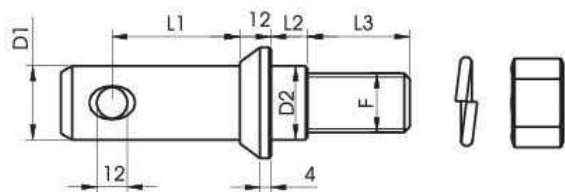
Codice	D	L	Q	€uro
AS217	18	41	20	6,60
AS218	18	55	20	8,55
AS219	26	52	30	9,60
AS220	26	61	30	10,00

PERNO PER TERZO PUNTO

Codice	D	L	F	€uro
AS56	19	96	12	2,80
AS57	19	126	12	3,15
AS58	19	164	12	3,25
AS59	19	210	12	3,60
AS60	22	98	12	4,15
AS61	22	126	12	4,20
AS62	25	100	12	3,60
AS63	25	120	12	4,10
AS64	25	166	12	4,80
AS65	25	210	12	5,50
AS66	25	250	12	5,60



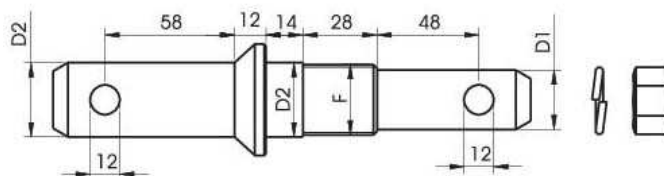
PERNO PER ATTACCO ATTREZZI



Codice	D1	D2	L1	L2	L3	F	€uro
AS174	22	18	45	8	40	M18X1,5	4,80
AS74	22	20	50	8	35	M20X1,5	5,40
AS75	22	22	50	14	35	M22X1,5	5,10
AS76	22	28	50	14	35	M22X1,5	5,70
AS77	28	28	60	14	40	M22X1,5	6,60
AS78	28	22	60	14	45	M22X1,5	6,60
AS171	28	28	55	14	45	M27X1,5	6,90

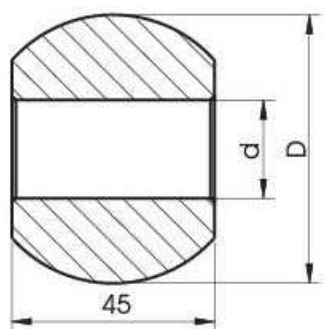
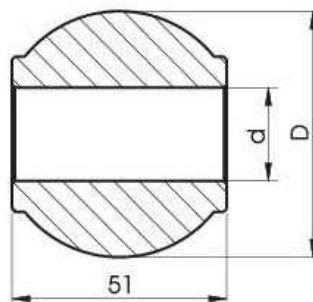
PERNO DOPPIO PER ATTACCO ATTREZZI

Codice	D	L	F	€uro
AS79	21,5	25	M24X3	8,50
AS80	22	28	M27X3	9,50
AS308	21,5	25	M24X1,5	8,50
AS309	22	28	M27X1,5	10,30



ROTULA PER SUPERIORI ATTACCO RAPIDO

Codice	D	d (A12)	€uro
AS90	50	25,4	6,00
AS91	60	25,4	9,00
AS92	60	32	9,00

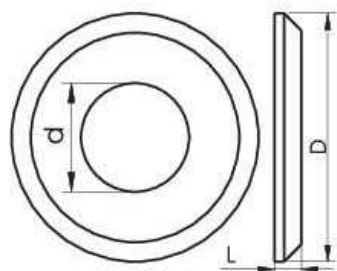
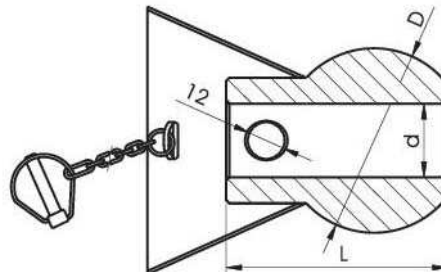


ROTULA SENZA CONO GUIDA PER BRACCI

Codice	D	d (A12)	€uro
AS414	44	22	6,00
AS93	56	22	6,40
AS94	56	28	6,00
AS95	64	28	8,50
AS96	64	38	12,40

CONI DI GUIDA CON ROTULA. CATENA E SPINE

Codice	D	d	L	€uro
AS101	56	28	69	19,70
AS102	64	28	72	21,20
AS103	64	38	72	22,80

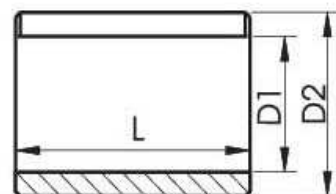


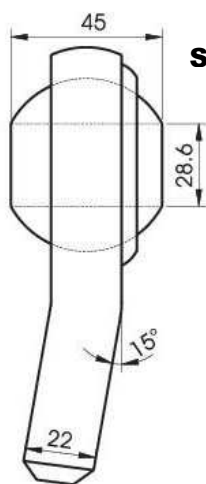
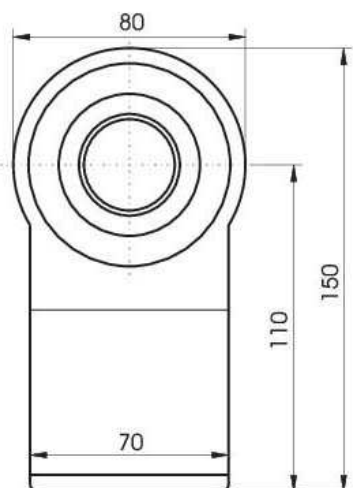
DISTANZIALE PER ROTULE

Codice	D	d	€uro
AS97	56	22	3,80
AS98	56	28	3,80
AS99	64	28	4,50
AS100	64	32	4,50

BUSSELE DI RIDUZIONE

Codice	D1	D2	L	€uro
AS107	19,4	25,4	51	1,20
AS108	22,4	28,4	44	1,20
AS109	25,4	32	51	2,30
AS110	28,4	38	44	2,60



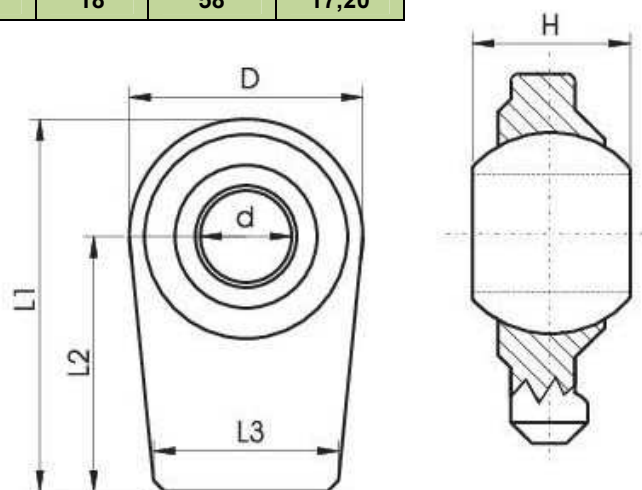


SUPPORTI PER BRACCI INFERIORI - BASE INCLINATA

Codice	€uro
AS310	20,00

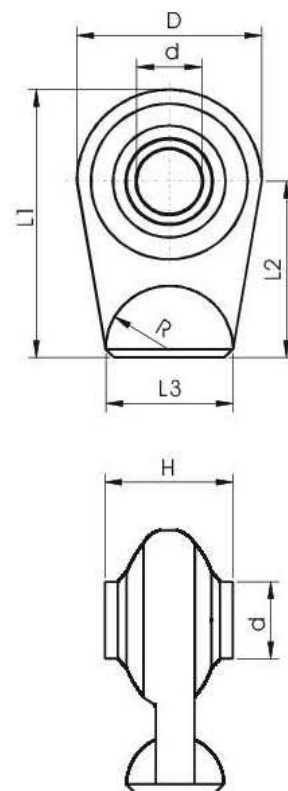
SUPPORTI CON ROTULA SFERICA - FIANCHI INCLINATI

Codice	d (A12)	H	D	L1	L2	L3	S	Ø Sfer	€uro
AS236	19,2	35	66	84	50	56	18	44	11,20
AS153	22,1	35	66	84	50	56	18	44	10,00
AS154	22,1	35	66	110	75	58	18	44	11,00
AS237	22,1 28,2	45	80	120	80	70	18	58	21,20
AS238	28,2	45	80	120	80	70	18	58	17,20
AS155	28,2	35	80	120	80	70	18	58	17,20



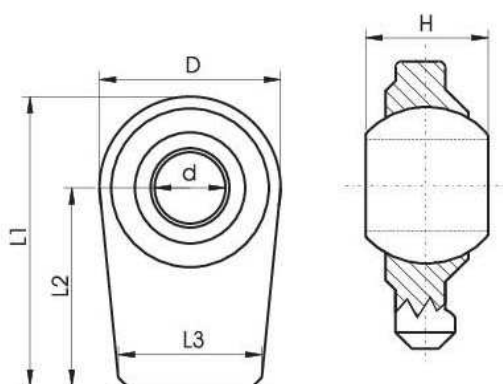
SUPPORTI CON ROTULA SFERICA PER BRACCI 3° PUNTO

Codice	d	H	D	L1	L2	L3	Sfer	R	€uro
AS221	19,2	30	52	75	48	25	38	12	9,90
AS156	19,2	44	62	91	60	34	38	17	9,90
AS224	20,2	44	62	91	60	34	38	17	11,20
AS226	22,1	51	75	103	65	38	50	19	13,00
AS227	22,1	35	62	82	50	26	44	13	13,00
AS157	25,4	51	75	103	65	38	50	19	19,00
AS228	25,4	51	82	106	65	50	54	25	19,00
AS232	30,2	55	82	106	65	50	54	25	19,60
AS233	32	51	82	110	70	50	50	25	19,60
AS235	35,2	55	82	106	65	50	54	25	20,20



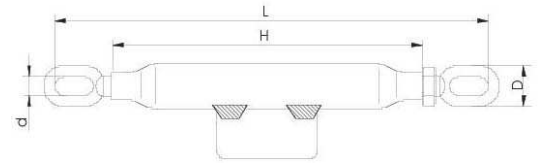
SUPPORTI CON ROTULA SFERICA PER BRACCI INFERIORI

Codice	d	H	D	L1	L2	L3	S	ØSfer	€uro
AS239	19,2	35	64	73	40	50	15	44	11,20
AS240	22,1	35	64	73	40	50	15	44	10,60
AS151	22,1	35	76	88	50	70	18	48	11,80
AS241	22,1	35	82	97	55	70	18	56	13,00
AS242	25,4	35	76	88	50	70	18	48	14,40
AS243	25,4	35	82	97	55	70	18	56	15,60
AS244	26	35	76	88	50	70	18	48	11,80
AS152	28,2	35	76	88	50	70	18	48	11,80
AS245	28,2	35	82	97	55	70	18	56	15,70
AS246	28,2	45	82	97	55	70	18	56	19,60
AS247	28,2	45	80	105	65	70	22	58	14,40
AS248	22,1/ 28,2	45	80	105	65	70	22	58	18,30
AS249	30	45	80	105	65	70	22	58	18,30



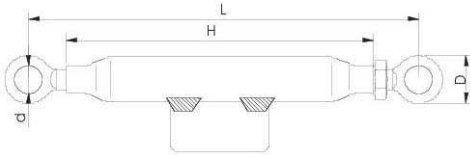
MANICOTTI CON TENDITORE

Codice	L - Min	L - Max	FI	H	d	D	€uro
AS158	210	300	16X2	130	14	35	14,20
AS159	250	350	18X2,5	140	14	36	15,60
AS160	274	375	20X2,5	140	14	38	17,20
AS161	280	395	22X2,5	150	14	38	18,60



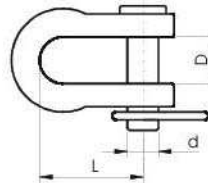
MANICOTTI CON TENDITORE

Codice	L - Min	L - Max	FI	H	d	D	€uro
AS259	210	300	16X2	120	18	46	14,20
AS260	230	330	20X2,5	130	18	46	16,70
AS261	250	375	22X2,5	150	20	50	20,00



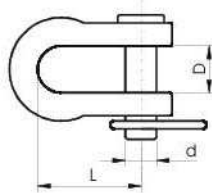
GRILLI CON PERNO E COPPIGLIA

Codice	L	D	d	€uro
AS162	40	18	12	4,30
AS163	40	18	14	4,30
AS164	55	20	16	5,60



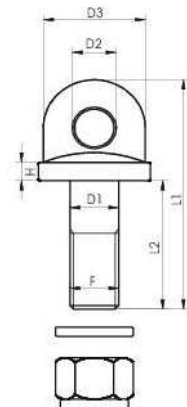
GRILLI A DOPPIO FORO CON PERNO E COPPIGLIA

Codice	L1	L2	D	d	€uro
AS165	50	72	18	14	6,30



PERNO AD OCCHIO CON DADO

Codice	Fil.	D1	D2	D3	D4	S	L1	L2	€uro
AS276	16X1,5	16	15	35	36	10	40	80	5,30
AS277	18X1,5	18	15	35	36	10	40	80	5,90
AS278	20X2,5	20	18	42	46	12	56	100	7,90
AS279	20X2,5	20	20	43	53	25	65	126	13,10
AS280	24X2,5	24	24	43	53	25	65	125	13,70



CATENA IMBRIGLIAMENTO E STABILIZZATORI PER TRATTORI

Codice	Fig.	L min	Maglia-ring	F1	F2	D1	D2	€uro
AS325	1	460	1 + 1	20X2,5	20X2,5	12	14	36,50
AS328	1	570	2 + 2	20X2,5	20X2,5	12	14	40,40
AS331	1	670	3 + 3	20X2,5	20X2,5	12	14	43,00
AS332	2	420	2 + 2	16X2	18X1,5	12	12	42,00
AS333	2	500	3 + 3	16X2	18X1,5	12	12	45,00
AS334	2	580	4 + 4	16X2	18X1,5	12	12	48,00
AS339	3	430	1 + 1	16X2	22X2,5	14	14	63,80
AS340	3	520	2 + 1	16X2	22X2,5	13	14	74,00

Fig. 1

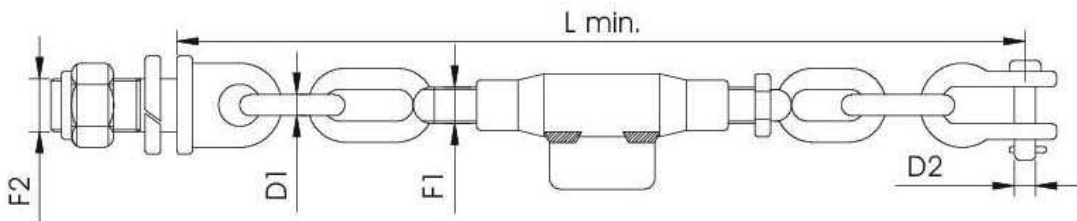


Fig. 2

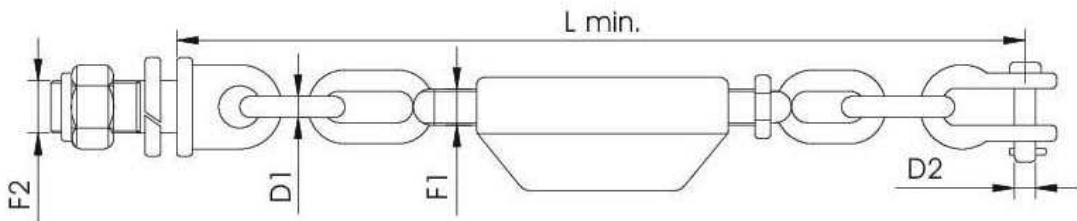
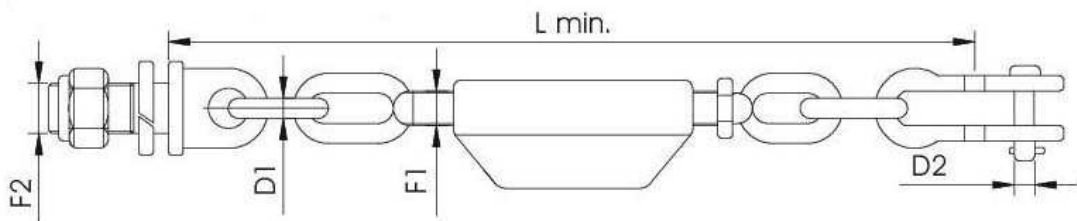
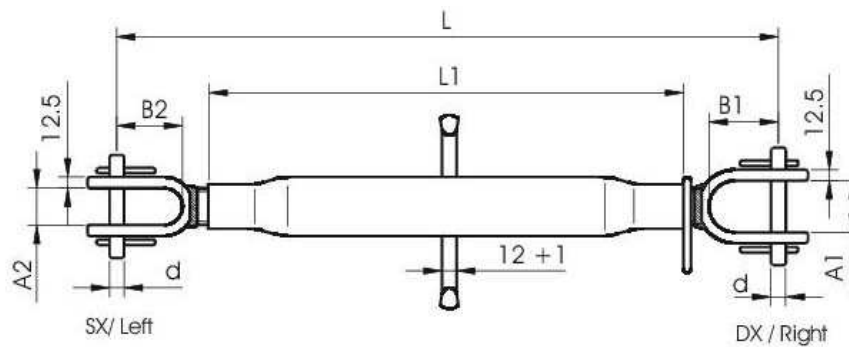


Fig. 3



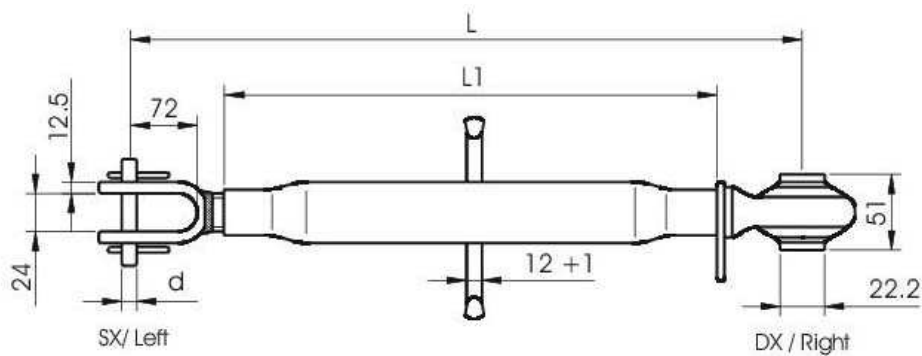
BRACCI DI SOLLEVAMENTO

Codice	L min	L max	Fil	L1	d	A1	B1	A2	B2	€uro
AS148	380	535	22X2,5	200	18	30	60	24	72	37,80
AS149	450	600	24X3	261	18	40	70	24	72	42,40
AS150	500	650	27X3	290	18	40	70	25	72	43,00

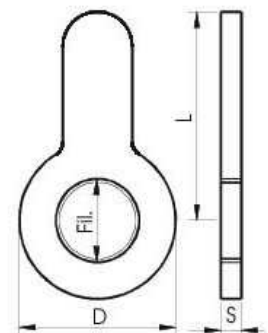


BRACCI DI SOLLEVAMENTO

Codice	L min	L max	L	d	d	Fil	€uro
AS288	490	705	340	16	18	24X3	52,00
AS289	520	735	380	19	18	24X3	58,60

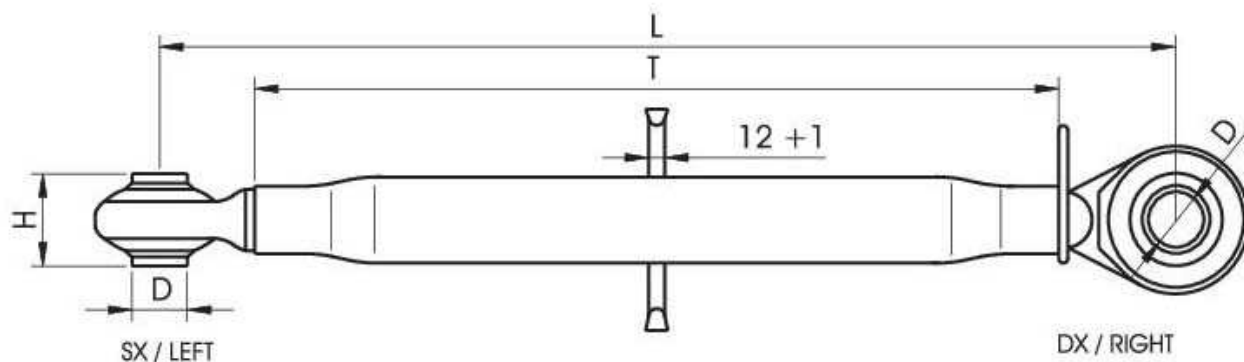


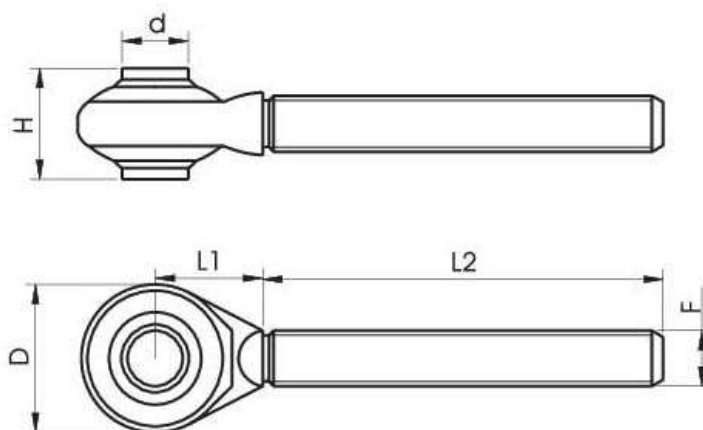
Codice	F1	F2	D1	D2	€uro
AS251	22X2,5	60	45	6	2,10
AS252	24X2,5	60	45	6	2,10
AS253	24X3	60	45	6	2,10
AS254	27X3	60	45	6	2,10
AS255	30X3	60	45	6	2,10
AS256	30X3,5	60	45	6	2,10
AS257	36X3	90	60	10	5,30
AS258	40X3	90	60	10	5,30



BRACCIO 3° PUNTO COMPLETO

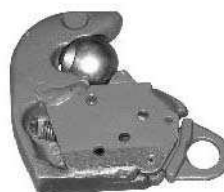
Codice	CAT.	D (A12)	H	Fil.	L Min.	L Max.	T	Tiranti		Euro
								DX	SX	
AS320	1°	19,2	44	22X2,5	250	350	160	186	187	23,50
AS130	1°	19,2	44	22X2,5	330	500	230	186	187	25,80
AS131	1°	19,2	44	22X2,5	400	560	300	186	187	25,80
AS132	1°	19,2	44	22X2,5	430	580	320	188	189	27,00
AS185	1°	19,2	44	22X2,5	480	620	370	188	189	30,00
AS184	1°	19,2	44	27X3	430	640	320	190	191	30,00
AS178	1°	19,2	44	27X3	480	690	370	190	191	37,60
AS133	1°	19,2	44	27X3	540	750	430	190	191	40,00
AS170	1°	19,2	44	27X3	580	790	470	190	191	40,00
AS134	1°	19,2	44	27X3	680	890	570	190	191	41,00
AS135	1° - 2°	19,2 25,4	44 51	27X3	480	680	360	192	193	35,20
AS136	1° - 2°	19,2 25,4	44 51	27X3	580	820	470	192	193	41,00
AS179	2°	25,4	51	27X3	460	680	320	192	193	31,70
AS183	2°	25,4	51	27X3	550	780	430	192	193	38,70
AS137	2°	25,4	51	27X3	620	850	500	192	193	34,00
AS175	2°	25,4	51	27X3	730	980	610	192	193	46,90
AS138	2°	25,4	51	30X3	540	800	425	194	195	37,00
AS180	2°	25,4	51	30X3	580	830	460	194	195	42,20
AS181	2°	25,4	51	30X3	640	890	520	194	195	38,70
AS182	2°	25,4	51	30X3	680	930	560	194	195	44,60
AS139	2°	25,4	51	30X3	730	980	610	194	195	46,90





Codice	Cat.	d (A12)	Fil.	Mano	H	L1	L2	D	Sfe	€uro
AS186	1°	19,2	22X2,5	DX	44	45	125	52	38	14,40
AS187	1°			SX						
AS188	1°	19,2	24X2,5	DX	44	50	115	57	38	16,70
AS189	1°			SX						
AS190	1°	19,2	27X3	DX	44	50	155	62	38	17,00
AS191	1°			SX						
AS192	2°	25,4	27X3	DX	51	55	170	74	50	17,60
AS193	2°			SX						
AS194	2°	25,4	30X3	DX	51	55	165	74	50	18,90
AS195	2°			SX						

Codice	Categoria	Ø Sfera	€uro
AS500	1°	44	123,60
AS501	2°	56	136,60
AS505	2° S	56	127,00
AS502	3°	64	156,00



Codice	Kit attuatore di ricambio	€uro
AS506	Kit attuatore ricambio cat. 2°S	55,00
AS507	Kit attuatore ricambio cat. 2°	55,00

Codice	Categoria	Ø Sfera	Filetto	€uro
AS503	2°	50	M20X1,5	58,60
AS504	3°	60	M27X2	123,60



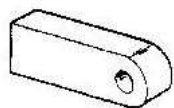


ATTACCO TERZO PUNTO IDRAULICO

(Completo di tubi, raccordi ed innesti rapidi)



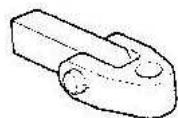
Codice	Applicazione	Descr.Attacchi	L.Mi n	Corsa	Ød	ØD	P	H	€uro
FIAT									
CF01	300	Snodo-Snodo	410	160	30	60	19,3	44	260,00
CF02	Piccola	Snodo-Snodo	460	210	30	60	19,3	44	240,00
CF03	470 Vigneto	Snodo-Snodo	530	280	30	60	19,3	44	260,00
CF04	570-580-670-1000	Snodo-Snodo	550	280	30	60	25,4	51	260,00
CF05	640-670-550	Snodo-Snodo	650	400	30	60	19,3	44	273,00
CF06	1180-1280-1300-1380-115/90	Snodo-Snodo	670	400	30	60	25,4	51	273,00
CF07	60/75C-70/75C-80/75C	Snodo-Snodo	500	225	35	70	19,3	44	351,00
CF08	Trattori oltre 100 HP	Snodo-Snodo	530	210	40	80	25,4	51	351,00
CF09	80/90-100/90-110/90-82/94	Snodo-Snodo	560	245	40	70	25,4	51	416,00
CF10	680-780-880-980-93/94	Snodo-Snodo	600	280	40	70	25,4	51	305,00
CF11	Serie L - 60/65 - 80/85								
CF13	130/90-140/90-160/90-180/90	Cerniera- G.rapido	600	235	45	80	32	-	780,00
CF14	Winner - F100 - F110 - F120-F130 - F140	Forcella- G.rapido	610	235	45	80	25,4	-	495,00
CF15			610	235	45	80	25,4	-	520,00
CF16	Winner-F100 - F115 - nuovo tip	Piastra-G.rapido	610	235	45	80	25,4	-	520,00
CF17	Serie M- 100-115-130-135-160								
CF18	Serie G da 170 a 240 HP	Cerniera- G.rapido	640	235	45	105	32,4	-	820,00
FENDT									
CFE01	308 - Trattori da 130 HP	Cerniera-snodo	700	280	45	80	25,4	51	455,00
OM									
CO01	650 - 750	Snodo-Snodo	650	400	30	60	19,3	44	273,00
CO02	850	Snodo-Snodo	550	280	30	60	25,4	51	273,00
<i>Lamborghini</i>									
CL01	R 135 Formula - 956	Snodo-Snodo	520	170	40	70	32,4	51	312,00
CL02	674/70								
CL03	115 - 135	Snodo-Snodo	600	235	40	70	25,4	51	300,00
CL04	190	Cerniera-snodo	590	235	45	80	32,4	51	377,00
CL05	1556	Cerniera-	600	190	45	80	32,4	-	612,00
CL06	503 - 583	Snodo-Snodo	530	280	30	60	19,3	44	267,00
MASSEY FERGUSON									
CM01	35 - 135	Snodo-Snodo	530	280	30	60	19,3	44	260,00
CM02	35-135-165-	Snodo-Snodo	550	280	30	60	25,4	51	260,00
CM03	168-240-254-255								
CM04	274	Snodo-Snodo	600	280	40	70	25,4	51	300,00



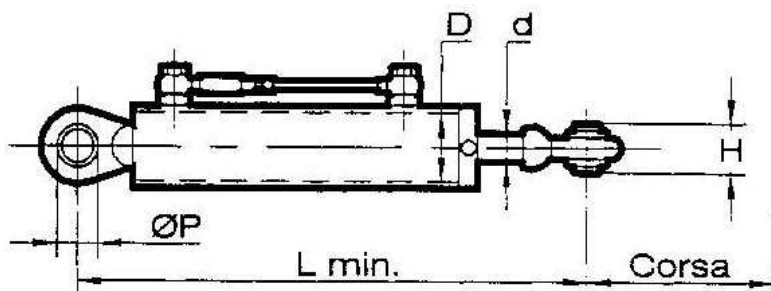
PIASTRA



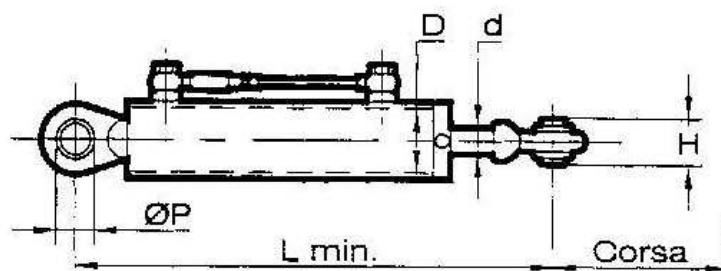
GANCIO RAPIDO

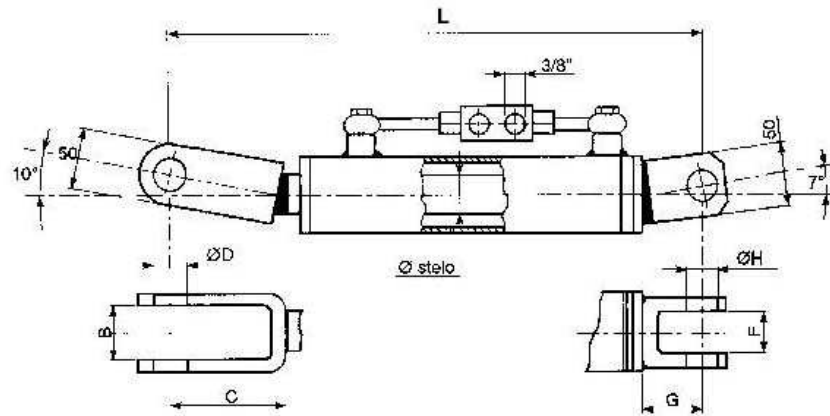


CERNIERA

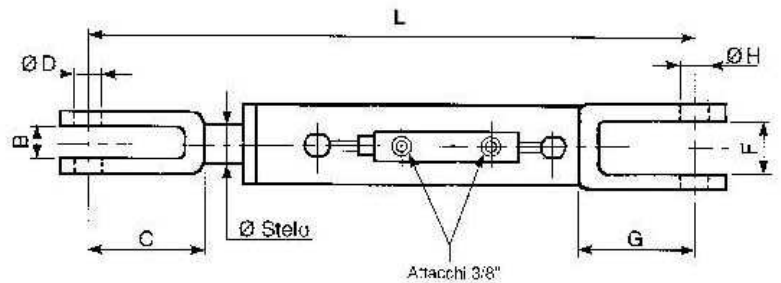


Codice	Applicazione	Descr.Attacchi	L.Min	Corsa	Ød	ØD	P	H	€uro
CFO01	78.40	Piastra-G.rapido	610	235	45	80	25.4	-	520,00
CFO02	82.40 – 83.40	Snodo-Snodo	680	320	40	70	25.4	51	390,00
CFO03	88.30 – 190 HP	Cerniera-G.rapido	850	425	45	105	32.4	51	910,00
CFO04	Dexta	Snodo-Snodo	530	280	30	60	19.3	44	312,00
CFO05	Major	Snodo-Snodo	550	280	30	60	25.4	51	273,00
JOHN DEERE									
CJ01	6100-6200-6300	Snodo-Snodo	550	170	40	70	25.4	51	390,00
CJ02	6400-6600	Cerniera-Snodo	550	170	40	70	32.4	51	520,00
CJ03	7600-7800 170 HP	Cerniera-G.rapido	630	220	50	90	32.4	51	780,00
CJ04	6800 120 HP	Cerniera-Snodo	600	255	45	80	32.4	51	520,00
CJ05	40.50 160 HP	Cerniera-Snodo	660	270	45	80	32.4	51	520,00
CJ06	33.50	Snodo-Snodo	660	270	40	70	21.2	44	455,00
CJ07	2650-2850	Snodo-Snodo	545	170	40	70	21.2	44	416,00
CJ08	940-1040-1140-1640-	Snodo-Snodo	500	280	30	60	25.4	51	273,00
CJ09	2040-2140-2000								
CJ10	8000	Piastra-G.rapido	740	275	45	105	35.4	-	780,00
CLA01	10000-13000-14500	Snodo-Snodo	620	255	40	70	25.4	51	403,00
CLA02	Blizzard da 65 a 90 HP	Snodo-Snodo	640	270	40	70	25.4	51	403,00
CLA03	Frutteto	Snodo-Snodo	530	265	30	60	19.3	44	383,00
CLA04	R3000-R3200	Snodo-Snodo	410	160	30	60	19.3	44	286,00
CLA05	C4000-CS4000-C3500	Snodo-Snodo	430	160	30	60	25.4	51	286,00
CLA06	4500-5500	Snodo-Snodo	480	210	30	60	25.4	51	286,00
CLA07	5000-6500-6000-7000	Snodo-Snodo	550	280	30	60	25.4	51	273,00
CLA08	12500	Snodo-Snodo	600	280	40	70	25.4	51	383,00
SAME									
CS01	Frutteto	Snodo-Snodo	430	90	30	60	25.4	51	383,00
CS02	Laser 100	Snodo-Snodo	520	170	40	70	32.4	51	429,00
CS04	Explorer 70-80-90	Snodo-Snodo	600	235	30	60	25.4	51	416,00
CS05	Antares 100-110-130-150	Snodo-Snodo	600	235	45	80	25.4	51	416,00
CS06	145-165-190- Titan	Cerniera-Snodo	590	235	45	80	32.4	51	416,00
CS07	Puledro-Italia-Sirenetta	Snodo-Snodo	460	210	30	60	19.3	44	273,00
CS08	Corsaro-Saturno-Leone	Snodo-Snodo	480	160	45	80	25.4	51	455,00
CS09	Ariete-Centauro-Centurion	Snodo-Snodo							
CS10	Leopard-Panter	Snodo-Snodo							
CS11	Falcon	Snodo-Snodo	430	160	30	60	25.4	51	273,00
CS12	Minitauro	Snodo-Snodo	480	280	30	60	25.4	51	273,00



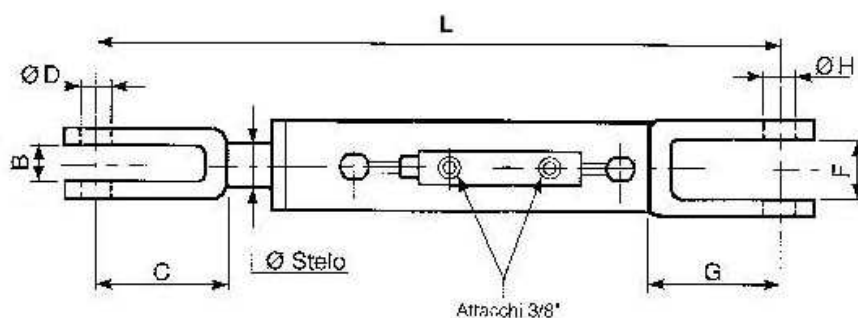


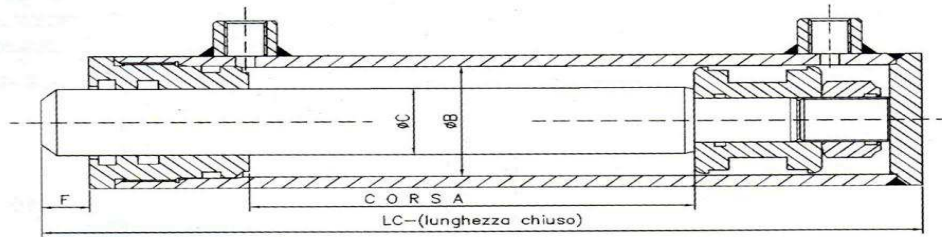
Codice	Applicazione	B	C	ØD	L.min	L.max	alesagg	stelo	F	G	ØH	€uro
	FIAT											
BF01	60/75C – 70/75C – 80/75C	41	115	22,5	460	577	70	35	41	67	22,5	390,00
	AGRIFULL											
BA01	SC60 – SC70 – SC80	41	115	22,5	460	577	70	35	41	67	22,5	390,00



Codice	Applicazione	B	C	ØD	L.max	Corsa	alesagg	stelo	F	G	ØH	€uro
	FENDT											
BFE01		61	80	22,5	560	190	80	45	51 35	22,5		390,00
	SAME <i>Lamborghini</i>											
BSL01	Tipo frutteto75	33	95	24,2	460	120	60	30	45	90	24,2	345,00
BSL02	Same70-80-90	33	95	24,2	460	120	60	30	45	90	24,2	345,00
BSL03	Explorer – Antares100 Laser 130 - 150	30	130	24,2	670	205	70	40	45	150	24,2	403,00
BSL04	Lamborghini 190	37	150	28,4	710	215	105	45	58	100	28,4	585,00
BSL05	Lamborghini 1500 - 1506	50	135	28,4	780	250	90	50	50	135	28,4	403,00
BSL06	Same 145 – 165 - 190	37	150	28,4	710	215	90	-	-	-	-	533,00
BSL07	Atares 110 – 130 – 150 Titan 190	33	135	28,4	730	170	80	40	50	220	28,4	416,00

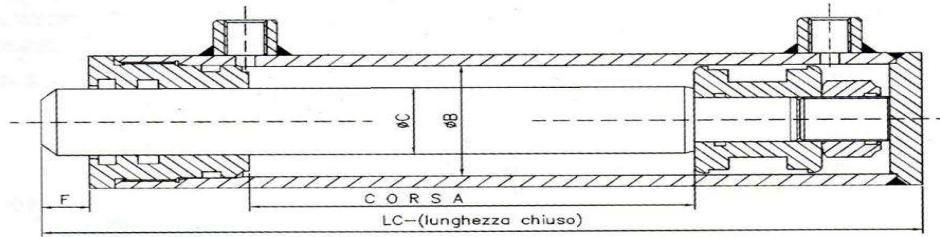
Codice	Applicazione	B	C	ØD	L min	corsa	alesaggio	stelo	F	G	ØH	€uro
FIAT												
BF02	605 C – 655 C	21	105	26,2	390	100	60	30	25	58	18,2	247,00
BF03	50/66-55/66-45/66-	23	130	22,5	420	90	60	30	37	90	22,5	325,00
BF04	55/65-60/65-70/65											
BF05	80/65	26	85	22,5	485	170	70	40	37	90	22,5	370,00
BF06	60/66 – 65/66	23	130	22,5	470	145	60	30	37	90	22,5	312,00
BF07	60/85 – 62/85 – 72/85	30	135	22,5	480	145	60	30	37	90	22,5	318,00
BF08	72/86 – 82/86	23	130	26,2	570	195	60	30	37	90	22,5	318,00
BF09	65/94 – 88/94 – 93/94 -	32	120	26,2	535	170	60	30	37	90	22,5	377,00
BF10	766 – 70/90 – 80/90 – 80/66 - 90/90 – 100/90 110/90											
BF11	115/90 – 80/85	35	125	26,2	530	170	70	40	37	90	22,5	364,00
BF12	1300 – 1180 – 1280 – 13/80											
BF13	1880 – 130/90 – 140/90											
BF14	160/90 – 180/90	43	140	28,4	590	190	80	45	51	75	28,4	400,00
BF15	880 – 980 - 780											
BF16	OM – 650 – 750 - 850	26	130	26,2	570	170	70	40	37	90	26,2	370,00
BF17	FIAT - 1000	35	135	28,4	600	170	70	40	45	155	28,4	370,00
BF18	Winner F100 – F110 – F120	32	130	26,2	630	170	70	40	40	128	25,4	370,00
BF19	Winner-F130 – F140	32	130	26,2	630	170	80	45	40	128	25,4	400,00
BF18	Tipo G 2° serie	67	135	32,4	900	225	105	45	52	90	32	559,00
BF19	Serie M100 – M115 – M130	33	105	26,2	530	220	80	40	37	52	25,4	400,00
JOHN DEERE												
BY01	8000	37	135	26	890	300	105	45	-	-	26	585,00
BY02	6400 – 6600	40	150	25,4	735	245	80	40	-	-	25,4	429,00
BY03	7800	40	160	26,2	830	223	90	45	-	-	25,4	455,00
BY04	6100 – 6200 – 6300	35	150	21,2	720	170	70	40	-	-	21,2	390,00
BY05	40.50	35	100	25,4	740	100	90	45	-	-	25,4	448,00
BY06	26.50	22	110	16,5	560	240	60	30	-	-	19,3	364,00
BY07	36.50	35	135	26,2	720	190	90	45	-	-	25,4	468,00
Landini												
BL01	Frutteto	33	95	24,2	460	135	60	30	45	90	24,2	338,00
BL02	6000	25	110	24,2	540	210	60	30	45	110	24,2	312,00
BL03	7000	25	110	24,2	635	215	60	30	45	110	24,2	305,00
BL04	98.80	28	125	25,4	620	250	70	40	50	85	25,4	429,00
BL05	Pfeifer	26	90	24,2	425	120	60	30	46	50	24,2	364,00
BL06	Blizzard	33	90	24,2	540	200	60	30	45	90	24,2	370,00
BL07	Dal 10.000 al 13.000	32	110	25	660	260	70	40	-	-	25,4	416,00





Cod. Art.	Ø B	Ø C	Corsa mm	L.Totale LC - mm	F	Euro
C251650	25	16	50	135	17	61,00
C2516100	25	16	100	185	17	64,00
C2516150	25	16	150	235	17	68,00
C2516200	25	16	200	285	17	72,00
C322050	32	20	50	155	16	63,00
C3220100	32	20	100	205	16	66,00
C3220150	32	20	150	255	16	70,00
C3220200	32	20	200	305	16	73,50
C3220250	32	20	250	355	16	77,00
C3220300	32	20	300	405	16	81,00
C3220400	32	20	400	505	16	85,00
C3220500	32	20	500	605	16	95,00
C4020100	40	20	100	230	22	72,00
C4020150	40	20	150	280	22	76,00
C4020200	40	20	200	330	22	80,00
C4020250	40	20	250	380	22	84,00
C4020300	40	20	300	430	22	88,00
C4020350	40	20	350	480	22	92,00
C4020400	40	20	400	530	22	94,00
C4020450	40	20	450	580	22	98,00
C4020500	40	20	500	630	22	102,00
C4025150	40	25	150	280	22	78,00
C4025200	40	25	200	330	22	82,00
C4025250	40	25	250	380	22	86,00
C4025300	40	25	300	430	22	90,00
C4025350	40	25	350	480	22	94,00
C4025400	40	25	400	530	22	98,00
C4025450	40	25	450	580	22	102,00
C4025500	40	25	500	630	22	105,00
C4025550	40	25	550	680	22	108,00
C4025600	40	25	600	730	22	114,00
C5025100	50	25	100	240	22	84,00
C5025150	50	25	150	290	22	88,00
C5025200	50	25	200	340	22	92,00
C5025250	50	25	250	390	22	96,00
C5025300	50	25	300	440	22	100,00
C5025350	50	25	350	490	22	104,00
C5025400	50	25	400	540	22	109,00
C5025450	50	25	450	590	22	112,00

Cod. Art.	Ø B	Ø C	Corsa mm	L.Totale LC - mm	F	Euro
C5025500	50	25	500	640	22	117,00
C5025550	50	25	550	690	22	121,00
C5025600	50	25	600	740	22	125,00
C5025800	50	25	800	940	22	142,00
C50251000	50	25	1000	1140	22	160,00
C5030150	50	30	150	290	22	90,00
C5030200	50	30	200	340	22	96,00
C5030250	50	30	250	390	22	100,00
C5030300	50	30	300	440	22	105,00
C5030350	50	30	350	490	22	110,00
C5030400	50	30	400	540	22	114,00
C5030450	50	30	450	590	22	120,00
C5030500	50	30	500	640	22	124,00
C5030550	50	30	550	690	22	128,00
C5030600	50	30	600	740	22	133,00
C5030800	50	30	800	940	22	150,00
C50301000	50	30	1000	1140	22	170,00
C6030100	60	30	100	260	23	105,00
C6030150	60	30	150	310	23	110,00
C6030200	60	30	200	360	23	114,00
C6030250	60	30	250	410	23	119,00
C6030300	60	30	300	460	23	124,00
C6030350	60	30	350	510	23	130,00
C6030400	60	30	400	560	23	136,00
C6030450	60	30	450	610	23	140,00
C6030500	60	30	500	660	23	146,00
C6030550	60	30	550	710	23	150,00
C6030600	60	30	600	760	23	156,00
C6030800	60	30	800	960	23	176,00
C60301000	60	30	1000	1160	23	196,00
C6035100	60	35	100	260	23	107,00
C6035150	60	35	150	310	23	112,00
C6035200	60	35	200	360	23	118,00
C6035250	60	35	250	410	23	124,00
C6035300	60	35	300	460	23	130,00
C6035350	60	35	350	510	23	135,00
C6035400	60	35	400	560	23	140,00
C6035450	60	35	450	610	23	145,00
C6035500	60	35	500	660	23	151,00



Cod. Art.	Ø B	Ø C	Corsa mm	L.Totale LC - mm	F	Euro
C6035550	60	35	550	710	23	156,00
C6035600	60	35	600	760	23	162,00
C6035800	60	35	800	960	23	185,00
C60351000	60	35	1000	1160	23	207,00
C6040200	60	40	200	360	23	124,00
C6040250	60	40	250	410	23	130,00
C6040300	60	40	300	460	23	137,00
C6040350	60	40	350	510	23	143,00
C6040400	60	40	400	560	23	150,00
C6040450	60	40	450	610	23	156,00
C6040500	60	40	500	660	23	163,00
C6040550	60	40	550	710	23	169,00
C6040600	60	40	600	760	23	176,00
C6040800	60	40	800	960	23	201,00
C60401000	60	40	1000	1160	23	227,00
C6340200	63	40	200	360	23	121,00
C6340250	63	40	250	410	23	128,00
C6340300	63	40	300	460	23	135,00
C6340350	63	40	350	510	23	142,00
C6340400	63	40	400	560	23	148,00
C6340450	63	40	450	610	23	155,00
C6340500	63	40	500	660	23	162,00
C6340550	63	40	550	710	23	168,00
C6340600	63	40	600	760	23	175,00
C6340800	63	40	800	960	23	202,00
C63401000	63	40	1000	1160	23	229,00
C7035100	70	35	100	260	23	120,00
C7035150	70	35	150	310	23	127,00
C7035200	70	35	200	360	23	133,00
C7035250	70	35	250	410	23	140,00
C7035300	70	35	300	460	23	146,00
C7035350	70	35	350	510	23	153,00
C7035400	70	35	400	560	23	160,00
C7035450	70	35	450	610	23	166,00
C7035500	70	35	500	660	23	173,00
C7035550	70	35	550	710	23	180,00
C7035600	70	35	600	760	23	186,00
C7035800	70	35	800	960	23	213,00
C70351000	70	35	1000	1160	23	240,00
C7040200	70	40	200	360	23	140,00

Cod. Art.	Ø B	Ø C	Corsa mm	L.Totale LC - mm	F	Euro
C7040250	70	40	250	410	23	147,00
C7040300	70	40	300	460	23	155,00
C7040350	70	40	350	510	23	162,00
C7040400	70	40	400	560	23	170,00
C7040450	70	40	450	610	23	177,00
C7040500	70	40	500	660	23	185,00
C7040550	70	40	550	710	23	192,00
C7040600	70	40	600	760	23	200,00
C7040800	70	40	800	960	23	230,00
C70401000	70	40	1000	1160	23	260,00
C8040200	80	40	200	380	25	168,00
C8040250	80	40	250	430	25	175,00
C8040300	80	40	300	480	25	183,00
C8040400	80	40	400	580	25	198,00
C8040500	80	40	500	680	25	213,00
C8040600	80	40	600	780	25	229,00
C8040800	80	40	800	980	25	259,00
C80401000	80	40	1000	1180	25	290,00
C8050200	80	50	200	380	25	183,00
C8050250	80	50	250	430	25	192,00
C8050300	80	50	300	480	25	201,00
C8050400	80	50	400	580	25	218,00
C8050500	80	50	500	680	25	236,00
C8050600	80	50	600	780	25	253,00
C8050800	80	50	800	980	25	288,00
C80501000	80	50	1000	1180	25	323,00
C10050200	100	50	200	410	25	256,00
C10050250	100	50	250	460	25	267,00
C10050300	100	50	300	510	25	278,00
C10050400	100	50	400	610	25	300,00
C10050500	100	50	500	710	25	322,00
C10050600	100	50	600	810	25	344,00
C10050800	100	50	800	1010	25	387,00
C100301000	100	50	1000	1210	25	431,00
C10060300	100	60	300	510	25	299,00
C10060400	100	60	400	610	25	324,00
C10060500	100	60	500	710	25	350,00
C10060600	100	60	600	810	25	375,00
C10060800	100	60	800	1010	25	425,00
C100601000	100	60	1000	1210	25	476,00